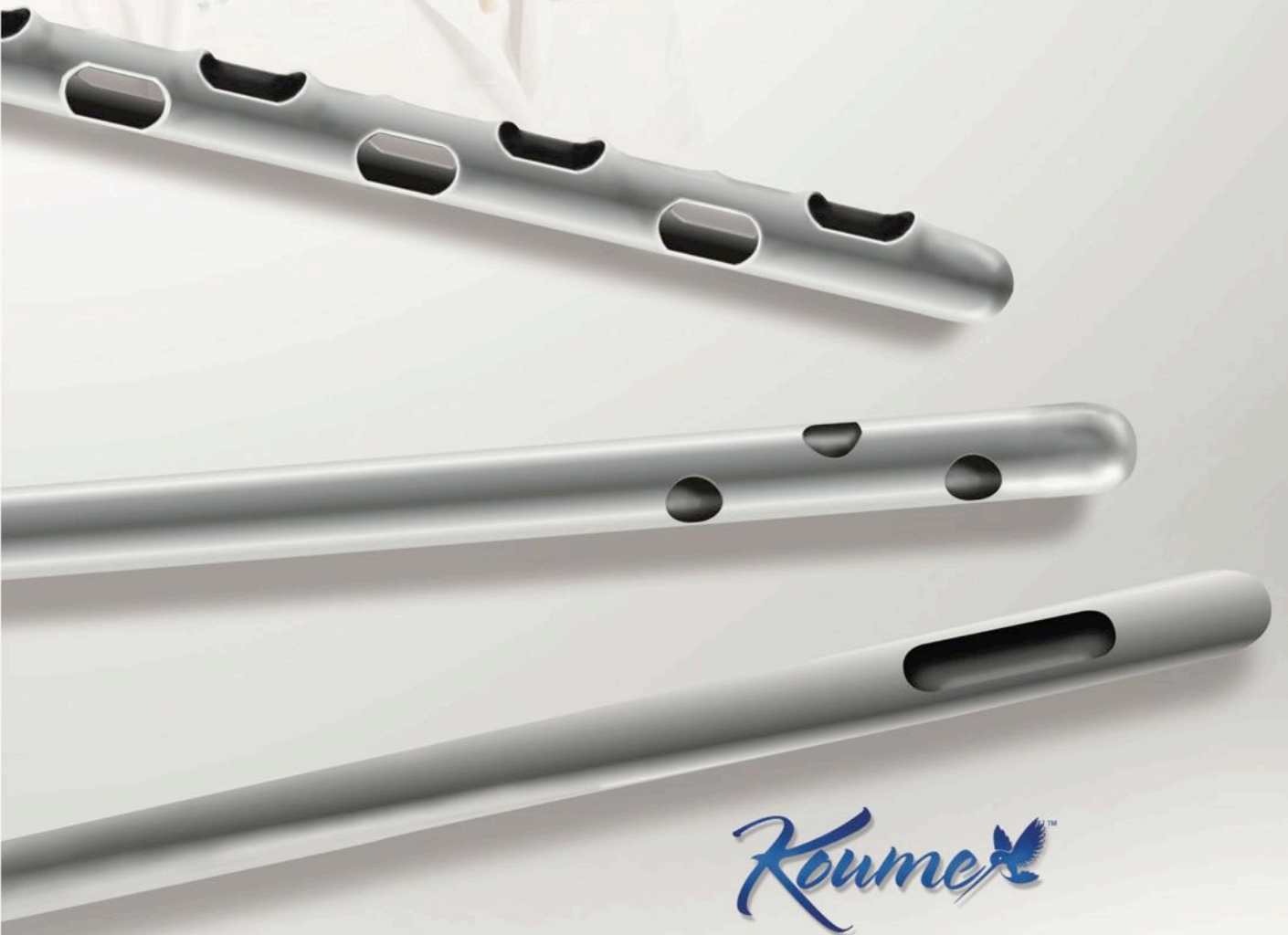




MARINAMEDICAL

SURGEON-FOCUSED
SOLUTIONS



Koume™

LIPOGRAFTING & LIPOSUCTION PORTFOLIO

An Open Letter to Our Valued Customers

Thank you for taking the time to review the most *Surgeon-Focused Portfolio for Lipografting and Liposuction*. By working with our valued customers and consulting with subject matter experts, we are proud to present our redesigned product line, which contains everything that you need to obtain safe, effective, and reproducible results.

For ease of use, we've organized this catalog into six sections. The first four sections coincide with the four phases of Lipografting: Infiltrating/Infusing, Harvesting/Aspirating, Processing, and Injecting/Grafting. The fifth section details the often-overlooked Accessories, and the sixth presents an easy step-by-step guide to Creating Your Own Cannula. Here are some details to help you navigate:



Section one focuses on **Infiltrating or Infusing**. In this section, we present all of the instruments, equipment, and tubing required to effectively infiltrate/infuse the surgical site with tumescent solution.

Section two contains everything that you need for **Harvesting or Aspirating**. This section features our proprietary cannula designs as well as all of the instruments, equipment, and tubing required to harvest/aspirate not only the proper amount of fat, but also the optimally sized aliquots of fat.

Section three is **Processing**. Regardless of your technique, this section will present all of the adapters, transfers, canisters, and centrifuges required to prepare your lipoaspirate for injection.

Section four is **Injecting or Grafting**. In this section, we showcase our proprietary cannula designs as well as all of the instruments required for accurate and precise injecting/grafting.

Section five introduces **Accessories** such as cleaning brushes, sterilization containers, garments, and syringes.

Last but not least is the **Create Your Own Cannula Section**. We listened to our valued customers and consulted with subject matter experts in order to create our *Koume*® cannula line, but we understand that your techniques evolve and every surgeon has their own preference. As such, we provide the opportunity for you to create your own cannula by selecting your (1) Hub/Handle, (2) Hole Pattern, (3) Length, and (4) Diameter.

If you have any questions or suggestions regarding this portfolio please feel free to contact us. We appreciate and rely on your feedback to fuel our process of continuous improvement.

Finally, we encourage you to visit our website, follow us on social media, and view the many informative and entertaining videos on our YouTube channel. We look forward to hearing from you and encourage you to stay tuned for more *Surgeon-Focused Solutions from Marina Medical*.

Thank you,

The Marina Medical Team

To place an order or to receive additional information on any of the products in this catalog, call:

(954) 924-4418 • Toll-Free: 1-800-697-1119

info@marinamedical.com

www.marinamedical.com

FOLLOW US!



facebook.com/MarinaMedicalInstruments



[@marinamedical](https://twitter.com/marinamedical)



google.com/+MarinaMedicalFL



youtube.com/c/MarinaMedicalFL



[@marinamedical](https://instagram.com/marinamedical)



linkedin.com/company/marina

INNOVATIVE CANNULA SETS

Instruments Inspired and Designed by Today's Top Surgeons



Alfredo Hoyos, MD is a board certified plastic surgeon trained at the Rosario-Saint Joseph Hospital in Bogota, Colombia. Along with his numerous peer-reviewed scientific publications, Dr. Hoyos is the inventor of Hi Definition Liposculpture (HDL), Dynamic Definition Lipoplasty (4D), and other advanced techniques in body contouring. Dr. Hoyos is not only an inventor, but also a medical illustrator, painter, and sculptor. Dr. Hoyos operates with his team at the Elysium Aesthetics Plastic Surgery Clinic in Bogota, Colombia as well as offices in Miami and Barcelona.



Toomey Hub



Toomey Hub



Toomey Hub

THE HOYOS CANNULA SET

Harvesting

800-367 • Hoyos Basket Cannula, 9G x 25cm, Toomey

800-365 • Hoyos 3-Hole Harvester, 9G x 30cm, Toomey

800-370 • Hoyos 3-Hole Harvester, 11G x 25cm, Toomey

800-375 • Hoyos 6-Hole Harvester, 9G x 30cm, Toomey

800-380 • Hoyos 6-Hole Harvester, 11G x 25cm, Toomey



Roger Khouri, MD, FACS is a board certified plastic surgeon trained in general surgery at the University of North Carolina, in plastic surgery at Brown University, in reconstructive microsurgery at New York University, and in hand surgery at Harvard. He was also a Professor of Plastic Surgery at Washington University School of Medicine before moving to Miami. Dr. Khouri is a scholar in plastic surgery with over 100 peer-reviewed scientific publications. He was a pioneer in reconstructive microsurgery and flaps before becoming a pioneer in fat transfer to the breast. Dr. Khouri has contributed to many innovations in liposuction and lipografting, and he became a recognized innovator and expert in natural, no implant, breast augmentation and post-mastectomy breast reconstruction. Dr. Khouri has personally trained more than 500 surgeons from 40 countries on his breakthrough procedures. Dr. Khouri operates with his team at the Miami Breast Center as well as at many hospitals in Miami.



Luer Lock Hub



Luer Lock Hub



Luer Lock Hub

THE KHOURI CANNULA SET

Infiltrating

800-100 • 6-Hole Infiltrator, 14G x 20cm, Luer

800-105 • 6-Hole Infiltrator, 14G x 25cm, Luer

800-110 • 6-Hole Infiltrator, 14G x 30cm, Luer

Harvesting

800-200 • Khouri Aggressive Harvester, 12G x 20cm, Luer

800-201 • Khouri Aggressive Harvester, 12G x 25cm, Luer

800-202 • Khouri Aggressive Harvester, 12G x 30cm, Luer

Injecting

800-300 • Khouri Reinjector, 14G x 15cm, Curved, Luer

800-305 • Khouri Reinjector, 14G x 20cm, Curved, Luer



Constantino Mendieta, MD, FACS is a board certified plastic surgeon trained at the Maricopa Medical Center, University of Miami, and Harvard University. He also performed a fellowship at Scotland Royal College of Surgery and served as Air Ambulance Medical Director at the Adams Air Force Base. Dr. Mendieta authored the book *The Art of Gluteal Shaping*, sharing the effective method behind his signature gluteal and body contouring technique. Dr. Mendieta is widely regarded for identifying the “Fantastic 4” – the four buttock shapes found around the world. Dr. Mendieta’s practice is located in Miami, FL.



Luer Lock Hub



Luer Lock Hub



Luer Lock Hub



Toomey Hub



Toomey Hub

THE MENDIETA CANNULA SET

Injecting

800-335 • Blunt Tip Injector, 16G x 12cm, Straight, Luer

800-344 • Spoon Tip Injector, 14G x 20cm, Curved, Luer

800-345 • Spoon Tip Injector, 14G x 20cm, Straight, Luer

800-346 • Spoon Tip Injector, 4mm x 20cm, Straight, Toomey

800-347 • Spoon Tip Injector, 4mm x 20cm, Curved, Toomey



Patented locking mechanism prevents cannula separating from syringe.



Adam Rubinstein, MD, FACS is a board-certified plastic surgeon trained at the Saint Louis University School of Medicine and with the world’s eminent surgeons at the forefront of developing techniques for plastic surgery. Dr. Rubinstein serves on the editorial staff of the *Aesthetic Plastic Surgery Journal*, published by the International Society of Aesthetic Plastic Surgery. He is also Chief of Plastic Surgery and Vice Chief of the Department of Surgery for Jackson North Medical Center. Dr. Rubinstein is a clinical assistant professor in the Department of Surgery at NOVA Southeastern University, clinical faculty for the Department of Plastic Surgery at Florida International University (FIU) School of Medicine, and clinical faculty for the Cleveland Clinic Plastic Surgery Residency Program in Florida.



Luer Lock Hub



Luer Lock Hub



Luer Lock Hub



Luer Lock Hub



Luer Lock Hub

THE RUBINSTEIN CANNULA SET

Infiltrating

800-445 • Rubinstein Infiltration, 18G x 12cm, Straight, Luer

Harvesting

800-425 • Rubinstein Diamond, 13G x 15cm, Straight, Luer, Bullet Tip

800-430 • Rubinstein Diamond, 13G x 15cm, Curved, Luer, Bullet Tip

800-435 • Rubinstein Diamond, 11G x 22cm, Straight, Luer, Bullet Tip

Injecting

800-440 • Blunt Injector, 18G x 12cm, Straight, Luer

The Practical Solution for Large Volume Fat Grafting

- **Delivered Sterile**
- **Atraumatic**
- **Prevents Surgeon Fatigue**
- **Cost Effective**



"The Lipografter is an efficient, closed system for atraumatic, low pressure, harvesting, processing and grafting of lipoaspirate."

— Dr. Roger Khouri

Developed by Dr. Roger Khouri as an efficient and cost-effective solution for large volume fat harvesting, processing, and grafting. The **Lipografter System™** saves valuable time in the operating room through the principles of economy of motion. Its patented **Atraumatic Tissue Valve (AT-Valve®)** allows for harvesting, processing, and reinjection in a closed system which results in minimal manipulation of the fat.

The **Lipografter System™** comes **sterile** with a complete **KVAC Kit** including a KVAC-Syringe®, AT-Valve®, four collection bags, and one transfer tubing set. Don't forget to complete your System with the purchase of infiltration, harvesting, and reinjection cannulas!

System Components:

- K-VAC Syringe® for constant spring-activated 300 mmHg harvesting pressure
- Atraumatic Tissue Valve (AT-Valve®) automatically routes lipoaspirate without clogging
- Tubing & Bags for Collection, Processing & Reinjection

KVAC-Syringe®

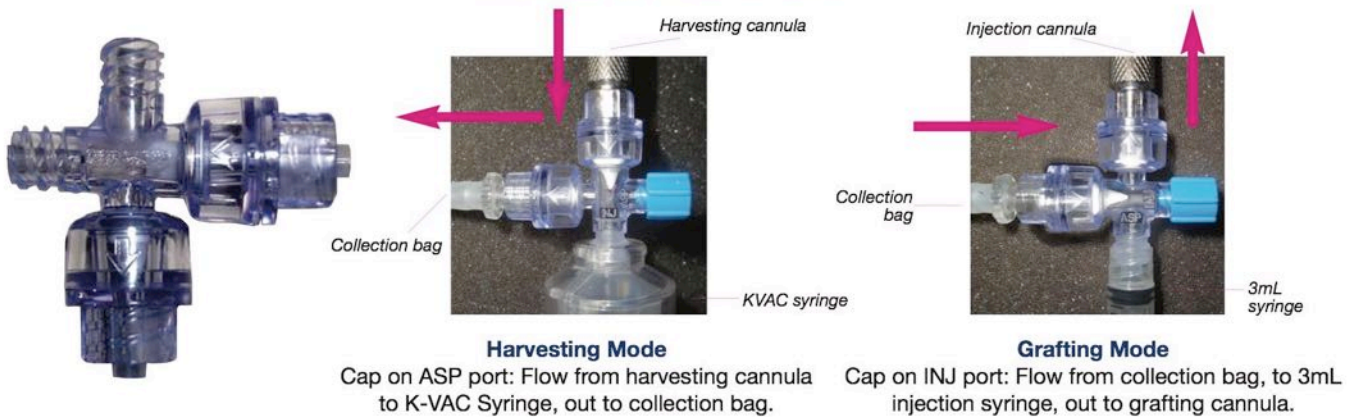


The **KVAC-Syringe®** is a manual constant vacuum device designed for harvesting fat. A 30mL BD syringe is embedded into the device. The vacuum is created inside the syringe by means of the pull action created by the springs which supply a constant force.

When the KVAC-Syringe® is fully cocked (i.e. the constant force springs are fully uncoiled when the surgeon pushes the plunger handle in the distal portion of the KVAC-Syringe®), the constant force springs generate the pulling motion on the plunger in the proximal direction, thereby, creating a constant, controlled, and low atraumatic vacuum of approximately 250 – 380 mmHg inside the BD Syringe for optimally harvesting autologous fat.

KVAC-Syringe® will give the surgeons an easy to use, cost effective, disposable fat harvesting device. Because it is manual, it does not need to be connected to heavy and expensive pumps and equipment. It is self contained, so it gives the surgeon more freedom of movement. It is ergonomic, so it lowers fatigue and creates a more comfortable operating environment. It creates low constant vacuum, so the harvested fat cells are not damaged. It is disposable, so it eliminates the opportunity for cross contamination.

Two Modes of the AT-Valve®



Harvest Phase



Step 1
Insert cannula, cock spring.



Step 2
Proceed with liposuction till K-VAC Syringe is full and plunger is all the way up.



Step 3
Push plunger down again. This will cock spring, and AT-Valve automatically sends lipoaspirate to collection bag... Repeat till bag is full.

Processing & Grafting Phase



Step 1
Gravity sedimentation concentrates fat in collection bags (Hang on sterile drape covered IV pole with sterile endotracheal tube stylet for hooks).



Step 2
Graft directly from bag, through AT-Valve, to 3mL syringe.

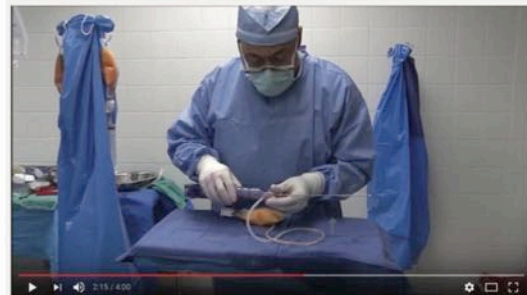


Step 3
Efficient micrografting 0.1 mL /cm with passes of **no wasted motion switching syringes & cannulas!**



Tubing & Collection Bags

- (4) 200mL Collection Bags
- Silicone Tubing with luer connectors



For more information on the Lipografter™ watch this video at:
bit.ly/lipografter



INFILTRATING/INFUSING



Luer Lock Hub

6-HOLE CANNULA

800-100 • 14G x 20cm, Luer Lock

800-105 • 14G x 25cm, Luer Lock

800-110 • 14G x 30cm, Luer Lock

Cannula designed specifically for infusing the harvest site with tumescent solution. Lubricious coating reduces trauma to the harvest site while the 6-hole configuration facilitates even distribution of the tumescent solution.



Luer Lock Hub

RUBINSTEIN CANNULA

800-445 • Rubinstein Infiltration, 18G x 12cm, Straight, Luer Lock

Cannula designed specifically for infusing the harvest site with tumescent solution. Proprietary design infuses a larger area while the solid proximal end keeps the surgical field dry. Lubricious coating reduces trauma to the harvest site while the 36-hole configuration facilitates even distribution of the tumescent solution.

HANDLES



Double Luer Lock Handle

800-161



Infusion Handle with ON/OFF Control

800-163

PUMPS



Infusion Pump
Bi-phasic infusion pump for tumescent infiltration
800-906



Randolph Infiltration Pump
Variable autoflow infiltration pump with quick release cover design
AR2000



Infusion Pump
Quiet, efficient, and vibration-free peristaltic infiltration pump. Adjustable flow rate from 0 to 1000mL/min.
800-905



TUMESCENT MEASURING DEVICE
TMD



1000ML PRESSURE INFUSOR
AR2010

TUBING



Infiltration Tubing
AR1163 • Box of 10



Infiltration Tubing for Peristaltic Pump
SU1168 • Box of 10



Infiltration Y-Tubing
AR1161 • Box of 10



Infiltration Tubing for Peristaltic Pump
AR1168 • Box of 10



Bifurcated Infiltration Tubing
For Lysonix Irrigator
AR1170LY • Box of 10



HARVESTING/ASPIRATING



Luer Lock Hub

KHOURI HARVESTER™

800-205 • 12G x 20cm, Luer Lock

800-210 • 12G x 25cm, Luer Lock

800-212 • 12G x 30cm, Luer Lock

The original 12-hole harvesting cannula designed with Dr. Khouri. The 12 holes are strategically arranged for 270° of fat harvesting potential to easily avoid surface irregularities. The summation of the surface area of the holes on this 12G (2.7mm), 12-hole cannula is greater than the surface area of a 10mm, one-hole cannula. The result is uniformly sized lobules of fat that are ideal for the Khouri Injector.



Luer Lock Hub

KHOURI AGGRESSIVE HARVESTER™

800-200 • 12G x 20cm, Luer Lock

800-201 • 12G x 25cm, Luer Lock

800-202 • 12G x 30cm, Luer Lock

Dr. Khouri's original 12-hole pattern modified to incorporate elevated holes that increase harvesting efficiency without causing severe donor site trauma. The result is uniformly sized lobules of fat that are optimal for the Khouri Injector.



Luer Lock Hub

RUBINSTEIN HARVESTER

800-425 • 13G x 15cm, Straight, Luer Lock

800-430 • 13G x 15cm, Curved, Luer Lock

800-435 • 11G x 22cm, Straight, Luer Lock



Luer Lock Hub

Single-hole harvesting cannula designed with Dr. Rubinstein. The single, diamond shaped hole has an acute angle on both the proximal and distal ends to optimize fat harvesting. The 15cm cannula is ideal for the submental region while the 22cm is designed for the body.

HARVESTING/ASPIRATING



Toomey Hub

TRIPORT HARVESTER

800-235 • 9G x 30cm, Toomey

800-240 • 7G x 30cm, Toomey

800-245 • 7G x 35cm, Toomey

Large volume harvesting cannula consisting of 3 holes configured into a pyramid for 270° of fat harvesting potential to easily avoid surface irregularities.



Toomey Hub

MERCEDES HARVESTER

800-250 • 9G x 30cm, Toomey

800-255 • 11G x 25cm, Toomey

800-260 • 11G x 25cm, Luer Lock



Luer Lock Hub

The popular 3-hole circumferential pattern with Koume's patented technology for optimal tissue management.



Toomey Hub

HOYOS 3-HOLE HARVESTER™

800-365 • 9G x 30cm, Toomey

800-370 • 11G x 25cm, Toomey

3-hole circumferential harvesting cannula designed by the innovative Dr. Hoyos, creator of Hi Definition Liposculpture. This cannula consists of teardrop shaped holes to optimize fat harvesting.



Toomey Hub

HOYOS 6-HOLE HARVESTER™

800-375 • 9G x 30cm, Toomey

800-380 • 11G x 25cm, Toomey

Bilayered, 6-hole circumferential harvesting cannula designed with Dr. Hoyos. The teardrop holes and 360° of harvesting potential make this the ideal cannula for large volume, multi-plane fat harvesting.

HARVESTING/ASPIRATING



Luer Lock Hub

KHOURI MICRO HARVESTER™

800-355 • 12G x 15cm, Luer Lock

800-360 • 12G x 25cm, Luer Lock

Khouri's original 12-hole pattern modified to incorporate holes uniquely designed to optimize injection with Koume's 16G (1.6mm), 17G (1.4mm), and 18G (1.2mm) Blunt Injectors.



Luer Lock Hub

MOSES MICRO HARVESTER™

800-405 • 11G x 15cm, Luer Lock

800-410 • 11G x 25cm, Luer Lock

Proprietary 50-hole pattern configured to achieve 270° of fat harvesting potential. The elevated holes increase harvesting efficiency while the size of the holes optimize the subsequent injection with Koume's 18G (1.2mm), 19G (1.0mm), 20G (0.9mm), and 22G (0.7mm) Blunt Injectors.

ACCESSORIES AND SPARE PARTS



Rectangular Foot Pedal
800-919



Pancake Foot Pedal
800-939

ASPIRATION MACHINES



LS2 Single Port Aspirator

A durable and reliable liposuction aspirator with sealed oil-less vacuum system. This makes LS2 virtually maintenance free. Vacuum is adjustable from 0 to 29 in Hg. Features dual motors that are very quiet (< 50 dBa).

Weight: 110lbs

800-900 • 110 V

800-901 • 220 V



NX3 Aspirator

A very quiet piston pump aspirator offering dual pneumatic foot pedals, a single port and single control. Vacuum is adjustable from 0 to 27 in Hg.

Weight: 45lbs

800-902



Touch-Up Aspirator

Small, quiet and portable aspirator. Perfect for follow-up procedures. Foot pedal control and vacuum adjustment capability. Canisters are secured to the back of the aspirator with supplied canister ring.

Weight: 20lbs

800-908



RM 2000 Aspirator

A super quiet aspirator that uses rotary valve pumps to provide up to 29.6 in Hg of vacuum. Features dual motors, electric footswitch, small footprint and easy to reach controls. RM 2000 is virtually maintenance free.

Weight: 90lbs

800-907

LOCKS



Twist Locks

Designed to hold the plunger of the syringe under vacuum for effortless syringe harvesting. Simply pull the plunger to the desired level then twist and lock!

- 800-164 • 10cc BD

- 800-165 • 20cc BD

- 800-166 • 30cc BD

- 800-168 • 10cc Monoject

- 800-169 • 35cc Monoject

- 800-170 • 60cc Monoject (shown above)



Clicker Locks

Designed to hold the plunger of the syringe under vacuum for effortless syringe harvesting. Simply pull the plunger then lock the clicker on the barrel of the plunger!

- 800-164CLICK • 10cc BD

- 800-165CLICK • 20cc BD

- 800-166CLICK • 30cc BD

- 800-168CLICK • 10cc Monoject

- 800-169CLICK • 35cc Monoject

- 800-170CLICK • 60cc Monoject (shown above)

ADAPTERS



Vacuum Adapter

Designed to turn your syringe into a handle that can be used with your aspiration machine.

- 800-175 • 20cc BD

- 800-180 • 60cc Monoject (shown above)

HANDLES



Toomey Power Handle
800-160 • 1" diameter



Luer Lock-to-Christmas Tree Handle
800-162 • 1" diameter



Koume Handle, Luer Lock
800-182 • 1" diameter

TUBING



High-Vac Aspiration Tubing
AR1160 • 10', 3/8 I.D. (Box of 10)

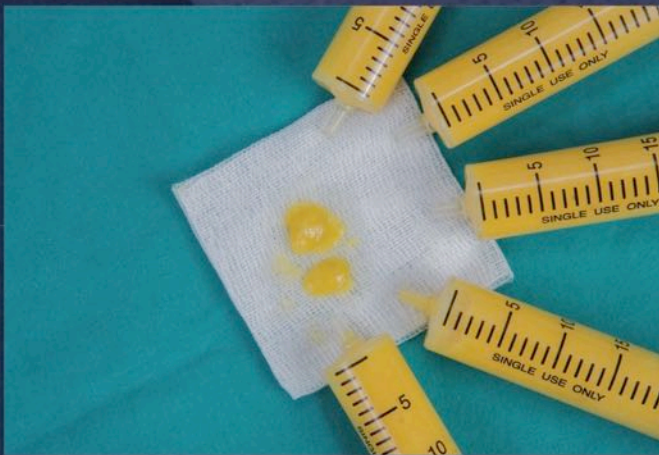


Tapered MicroAire® Compatible Aspiration Tubing
AR1159 • 10' (Box of 10)

MicroAire® is a registered trademark of MicroAire Surgical Instruments



High-Flex Aspiration Tubing
AR37050 • 9' (2.7m), 9/32" (7.1mm) I.D. (Box of 10)



PROCESSING

SYRINGE HOLDER RACK

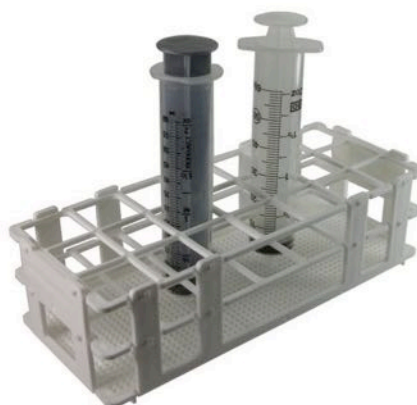
- 800-500 • 1/3/5cc BD

- 800-501 • 10cc BD

- 800-502 • 10/12cc Monoject

- 800-503 • 20/30cc BD and 20cc Monoject

- 800-504 • 60cc BD and 35/60cc Monoject



ADAPTERS



Female Luer Lock Cap
800-153



Toomey Syringe Cap
Non-Sterile, autoclavable
800-154



Luer Lock Cap
Non-Sterile, 10/bag
800-149

TRANSFERS



Toomey-to-Luer Lock Cannula
800-151



Toomey-to-Luer Lock Syringe
800-152



Toomey-to-Toomey
800-150



Luer Lock-to-Luer Lock
800-155

CANISTERS



Reusable Jar
AGB1200 • 1200mL
AGB2800 • 2800mL



Syringe Fill Canister
800-927 • 6 x 60cc



Reusable Amsino Canister
AC2000 • 2000mL canister
AL2000 • Inner Lining (Box of 20)



Aquavage Canister
800-925 • 1200cc
800-926 • 2000cc



DeRoyal Canister
DR1500 • 1500mL
DR2500 • 2500mL



Filtron Canister
800-921 • 100cc
800-922 • 250cc
800-923 • 500cc
800-924 • 1000cc
800-940 • 2000cc



Mega 1500
800-920



Bemis Canister
BE2000 • 2000mL (Box of 12)



Bemis Canister
BE1200 • 1200mL (Box of 12)



Reusable Baxter Canister
BC1500 • 1500mL
BL1500 • Liner and Lid (Box of 20)

STANDS



IV Pole
Fits: LS2, NX3
800-900 P



Canister Holder
Fits: LS2, NX3
800-900 ACC



Aquavage Stand
Reusable Stainless Steel Stand
for Aquavage Canisters.
Detachable legs.
800-928

CENTRIFUGES



**Spin
Four 60cc
Syringes!**

Built-in syringe rack

WhirlyBird™



Non-Autoclavable Centrifuge

- 800-000S** • WhirlyBird™ manual autoclavable centrifuge
- 800-010S** • with 10cc syringe holder
- 800-020S** • with 20cc syringe holder
- 800-030S** • with 30cc syringe holder
- 800-060S** • with 60cc syringe holder (pictured)

- 800-000** • Non-autoclavable centrifuge
- 800-010** • with 10cc syringe holder
- 800-020** • with 20cc syringe holder
- 800-030** • with 30cc syringe holder
- 800-060** • with 60cc syringe holder (pictured)



INJECTING/GRAFTING



Luer Lock Hub

KHOURI INJECTOR

800-300 • 14G x 15cm, Curved, Luer Lock

800-305 • 14G x 20cm, Curved, Luer Lock

800-310 • 14G x 20cm, Straight, Luer Lock

800-312 • 14G x 25cm, Curved, Luer Lock

Injection cannula designed with Dr. Khouri that consists of an atraumatic, spatulated tip to facilitate controlled dissection and a single hole for accurate and precise injection. Curved design replicates the natural contour of the body.



Luer Lock Hub



Luer Lock Hub



Toomey Hub



Toomey Hub

SPOON-TIP INJECTOR

800-344 • Spoon Tip Injector, 14G x 20cm, Curved, Luer Lock

800-350 • Spoon Tip Injector, 11G x 30cm, Luer Lock

800-340 • Spoon Tip Injector, 14G x 15cm, Luer Lock

800-345 • Spoon Tip Injector, 14G x 20cm, Straight, Luer Lock

800-346 • Spoon Tip Injector, 8G x 20cm, Straight, Toomey

800-347 • Spoon Tip Injector, 8G x 20cm, Curved, Toomey

Lubricious coating reduces trauma to the recipient site while the spoon tip allows for controlled, atraumatic injection.



Luer Lock Hub

BLUNT INJECTOR

- 800-335 • 16G x 12cm
- 800-330 • 17G x 9cm
- 800-325 • 18G x 7cm
- 800-320 • 19G x 5cm
- 800-315 • 20G x 4cm
- 800-395 • 22G x 3cm

Atraumatic tip and lubricious coating reduce trauma to the recipient site while the single side hole allows for accurate and precise injection. Blunt tip provides additional safety.



INJECTION GUN SETS

- 800-400 • 1, 3, 5, 10cc BD
- 800-402KIT • 3, 5, 10, 20, 30cc BD and 60cc Monoject

THE LIPOGRAFTER SYSTEM™

PROCESSING AND GRAFTING PHASE



Step 1

Gravity sedimentation concentrates fat in collection bags (Hang on sterile drape covered IV pole with sterile endotracheal tube stylet for hooks).



Step 2

Graft directly from bag, through AT-Valve to 3mL syringe.



Step 3

Efficient micrografting 0.1 mL/cm pass. No wasted motion switching syringes & cannulas.

SPECIALTY CANNULAS



Luer Lock Hub

SINGLE HOLE DISSECTOR

800-385 • 16G x 15cm, Luer Lock

Specialty cannula with a spatulated tip designed to facilitate controlled, atraumatic dissection.



Toomey Hub

BASKET CANNULA

800-367 • 9G x 25cm, Toomey

Specialty cannula with a flared tip designed to debulk and separate. This versatile cannula can be utilized with or without vacuum as well as to harvest and inject.



Luer Lock Hub

V-DISSECTOR

800-391 • 16G x 10cm, Luer Lock

Specialty cannula with a dissecting tip designed for undermining dense, fibrous tissue.

ACCESSORIES



CANNULA CLEANING BRUSHES

1575-CCS1630 • 16G x 30cm

1575-CCS1830 • 18G x 30cm

1570-BR2 • 2mm x 42cm

1570-BR3 • 3mm x 48cm

1570-BR4 • 4mm x 48cm

1570-BR5 • 5mm x 48cm



TRAYS

300-200 • 10cm x 19cm x 4cm Sterilization Container

300-201 • 25cm x 15cm x 2cm Sterilization Container

300-202 • 25cm x 15cm x 3.8cm Sterilization Container

SYRINGES



800-960



800-961

800-960 • 60cc Luer Lock Syringe (Box of 160)

800-961 • 60cc Toomey Monoject Syringe (Box of 20)

800-962 • 60cc Luer Lock BD Syringe (Box of 160)

800-963 • 60cc BD Syringe Catheter Tip (Box of 40)

800-964 • 60cc Piston Irrigation Syringe (Box of 50)

800-965 • 30cc Luer Lock Syringe (Box of 160)

800-966 • 20cc Luer Monoject Syringe SoftPack (Box of 40)

800-967 • 20cc Luer Monoject Syringe RigidPack (Box of 50)

800-968 • 10cc Luer BD Syringe (Box of 100)

800-969 • 3cc Luer Monoject Syringe SoftPack (Box of 100)

800-970 • 1cc Luer BD Syringe (Box of 100)

BIO FILTER FOR LIPOSUCTION

800-900-Filter • Single Filter

800-903 • Pack of 5



GARMENTS



Liposuction Sleeve
Supply arm
measurements for size.
Hook and Eye adjustable
GA502



**Men's One-Piece
Body Control**
Sizes: S, M, L, XL, XXL
Snap crotch fly front
GA302



Girdles
Sizes: S, M, L, XL
GA92W • 3" regular waist
GA92HW • 6" regular waist



**Men's and Women's to
the Knee Girdle**
Sizes: S, M, L, XL
Hook and Eye adjustable
GA90KG



Men's/Women's Binder
Touch and Stay®
6", 9" and 12" wide.
Velcro adjustable.
GA802SM • 22" - 44"
GA802ML • 30" - 50"

Add S, M, L, or XL for size

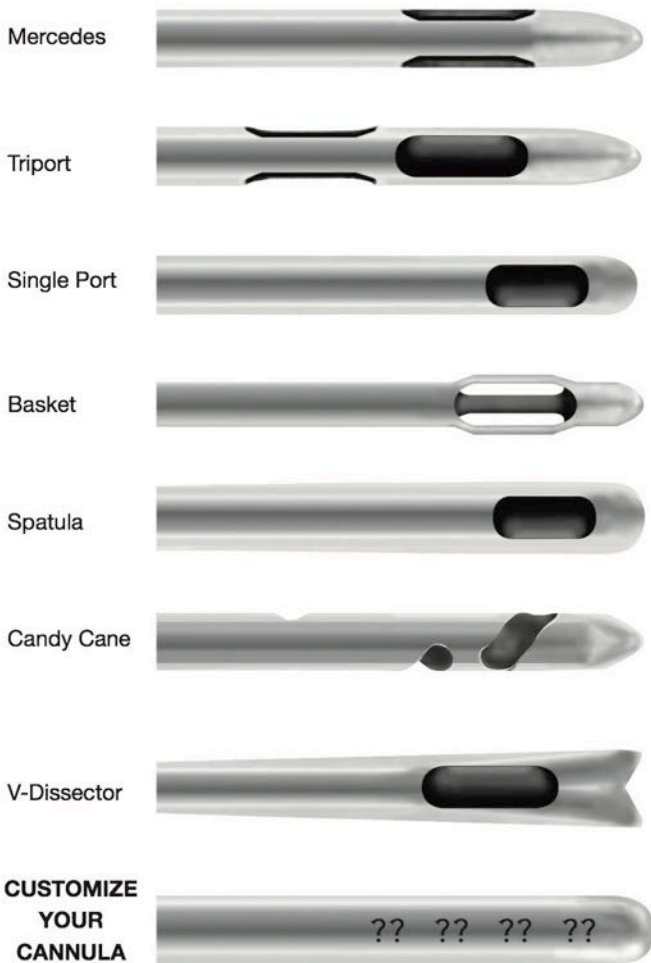
CREATE YOUR OWN CANNULA

We listened to our valued customers and consulted with subject matter experts in order to create our **Koume®** cannula line, but we understand that your techniques evolve and every surgeon has their own preference. As such, we provide the opportunity for you to create your own cannula by selecting your (1) Hub/Handle, (2) Hole Pattern, (3) Length, and (4) Diameter. The options listed on this page result in over 10,000 unique cannulas so regardless of your needs, we're confident that we can deliver the solution.

1 Choose Your Hub/Handle



2 Choose Your Hole Pattern



3 Choose Length (cm)


5, 7, 8, 9, 10, 11, 12, 15, 20, 23, 26, 30, 32



4 Choose Diameter

- 20G
- 19G
- 18g
- 17G
- 16G
- 15G
- 14G
- 13G
- 12G
- 3mm
- 3.5mm
- 4mm
- 4.7mm
- 5mm
- 6mm
- 7mm
- 8mm

CONVERSION CHART	
Gauge	MM
22	0.7
20	0.9
19	1.0
18	1.2
17	1.4
16	1.6
14	2.1
13	2.4
12	2.8
11	3.0
9	3.7
7	4.6



955 SHOTGUN ROAD
SUNRISE, FL 33326 USA

TEL: 954.924.4418

TOLL-FREE: 800.697.1119

FAX: 954.924.4419

TOLL-FREE FAX: 800.748.2089

WWW.MARINAMEDICAL.COM